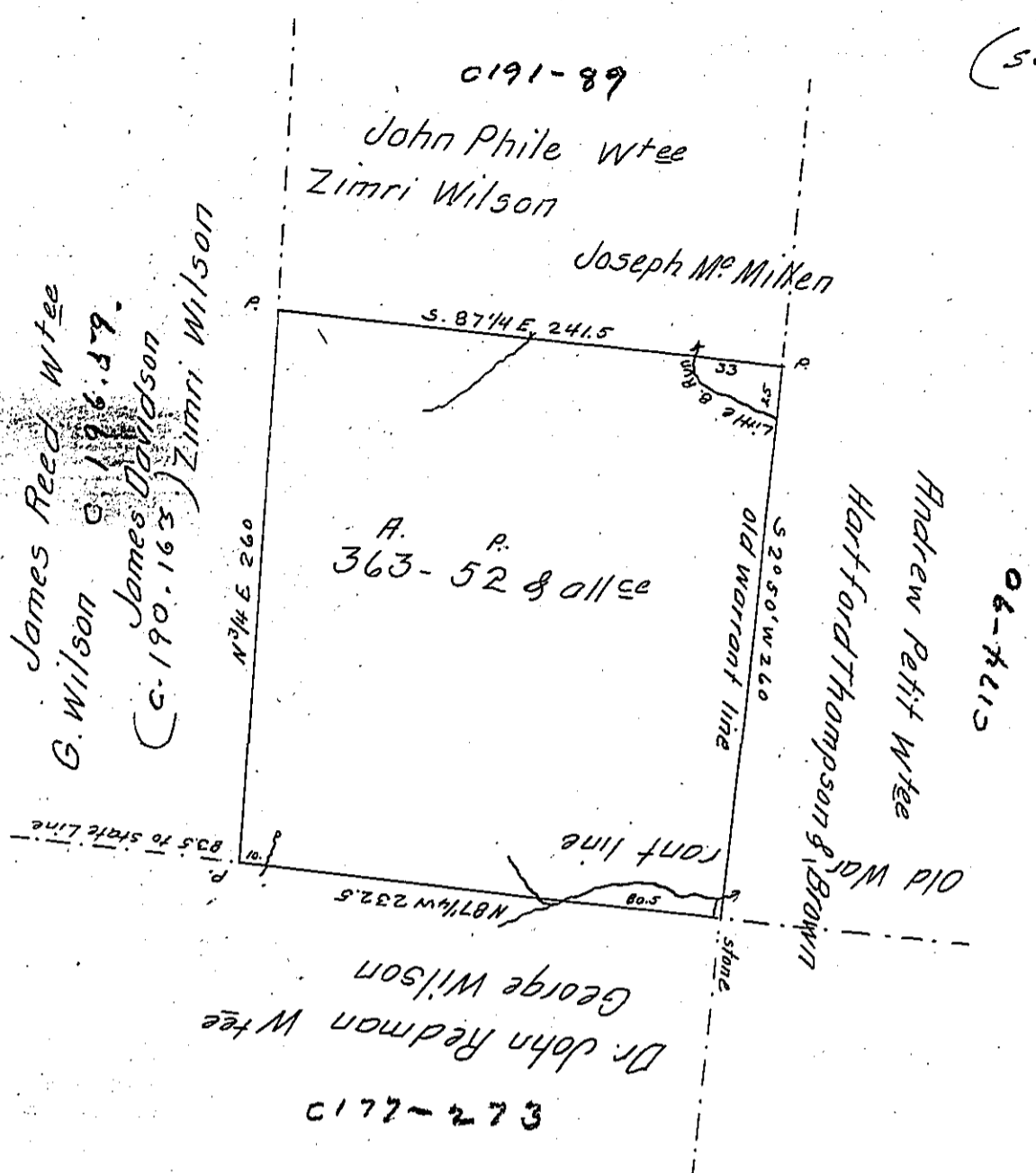


(see C. 212. 62)



Draft of a tract of land. Situated in South Beaver Township, in the County of Beaver containing 363 acres 52 perches & allowance of land. Surveyed for Joseph M<sup>c</sup>Millin, James Brown, William M<sup>c</sup>Dade, George Wilson, James Davidson & Zimri Wilson the 9<sup>th</sup> & 10<sup>th</sup> days of Feb. 1871. being a Tract of land Originally Surveyed in pursuance of a Warrant granted to Joseph Pfieler dated 14<sup>th</sup> April 1792.

To Hon. J. M. Campbell  
Surveyor General

Azariah Wynn C. S.

IN TESTIMONY that the above is a copy of the original remaining on file in the Department of Internal Affairs of Pennsylvania, made conformably to an Act of Assembly approved the 16th day of February, 1833, I have hereunto set my Hand and caused the Seal of said Department to be affixed at Harrisburg, this ninth day of May 1906.

*Azariah Wynn*  
Secretary of Internal Affairs.